

FEATURES AND SPECIFICATIONS

Features and Benefits

- Snap-in peg locks header to PCB for optimum retention
- Fully polarized to mating receptacle
- Surface Mount Compatible

Reference Information

Product Specification: PS-43045

Packaging: Tray

UL File No.: E29179

CSA File No.: LR19980

TUV License No.: R95107

Mates With: 43025

Designed In: Millimeters

Electrical

Voltage: 250V

Current: 5.0A max.

Contact Resistance: 10mΩ max.

Dielectric Withstanding Voltage: 1500V AC

Insulation Resistance: 1000 MΩ min.

Mechanical

Insertion Force to PCB: 7.5kgf max. (16.5 lb)

Physical

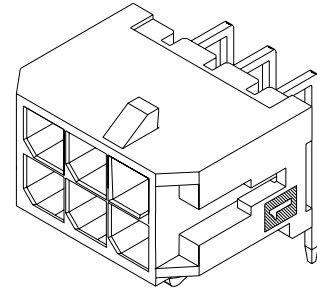
Housing: High temperature LCP, UL 94V-0

Contact: Phosphor Bronze

Plating: Tin or Gold

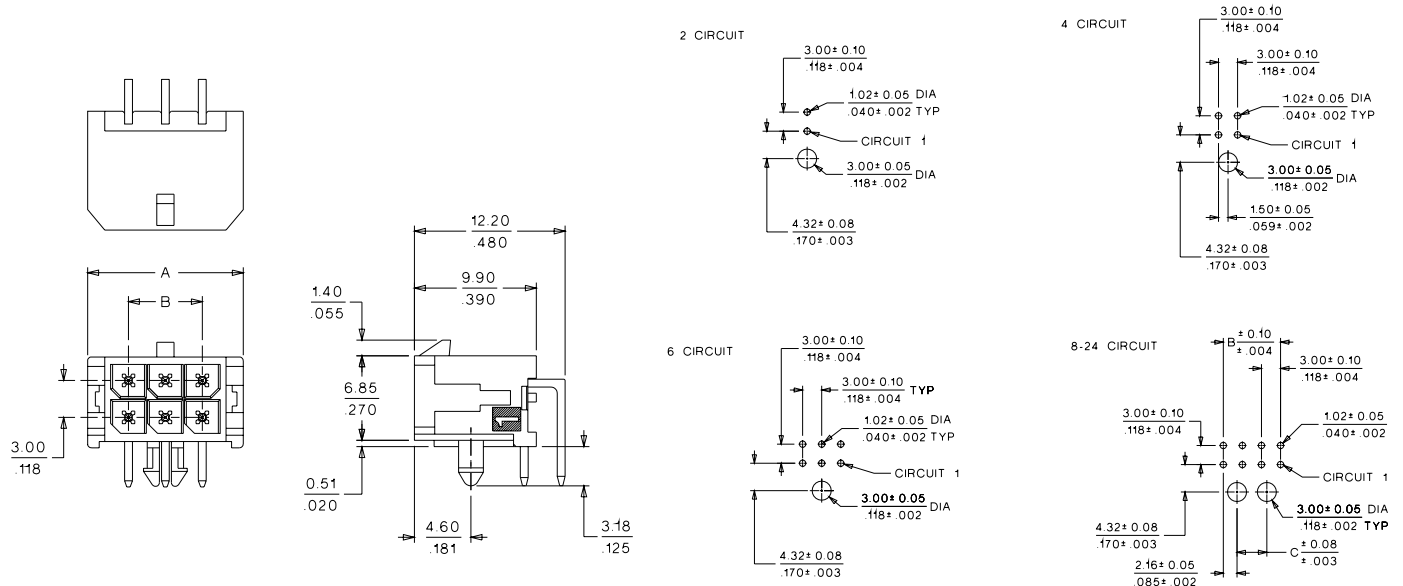
molex® 3.00mm (.118") Pitch Micro-Fit 3.0™ Wire-to-Board Header

43045 Dual Row Right Angle



PCB and Wire Connectors

J



ORDERING INFORMATION AND DIMENSIONS

Circuits	Order No.			Dimension			Overall Height When Mated With:	
	Tin	15µ" Gold	30µ" Gold	A	B	C	43025	10.29 (.405)
2	• 43045-0200	43045-0201	• 43045-0202	6.65 (.262)			43025	10.29 (.405)
4	• 43045-0400	43045-0401	• 43045-0402	9.65 (.380)	3.00 (.118)		43025	10.29 (.405)
6	• 43045-0600	43045-0601	• 43045-0602	12.65 (.498)	6.00 (.236)		43025	10.29 (.405)
8	• 43045-0800	43045-0801	• 43045-0802	15.65 (.616)	9.00 (.354)	4.70 (.185)	43025	10.29 (.405)
10	• 43045-1000	43045-1001	• 43045-1002	18.65 (.734)	12.00 (.472)	7.70 (.303)	43025	10.29 (.405)
12	• 43045-1200	43045-1201	• 43045-1202	21.65 (.852)	15.00 (.591)	10.70 (.421)	43025	10.29 (.405)
14	• 43045-1400	43045-1401	• 43045-1402	24.65 (.970)	18.00 (.709)	13.70 (.539)	43025	10.29 (.405)
16	• 43045-1600	43045-1601	• 43045-1602	27.65 (1.088)	21.00 (.827)	16.70 (.657)	43025	10.29 (.405)
18	• 43045-1800	43045-1801	• 43045-1802	30.65 (1.206)	24.00 (.945)	19.70 (.776)	43025	10.29 (.405)
20	• 43045-2000	43045-2001	• 43045-2002	33.65 (1.325)	27.00 (1.063)	22.70 (.894)	43025	10.29 (.405)
22	• 43045-2200	43045-2201	• 43045-2202	36.65 (1.443)	30.00 (1.181)	25.70 (1.012)	43025	10.29 (.405)
24	• 43045-2400	43045-2401	• 43045-2402	39.65 (1.561)	33.00 (1.299)	28.70 (1.130)	43025	10.29 (.405)

• US Standard Product, available through Molex franchised distributors